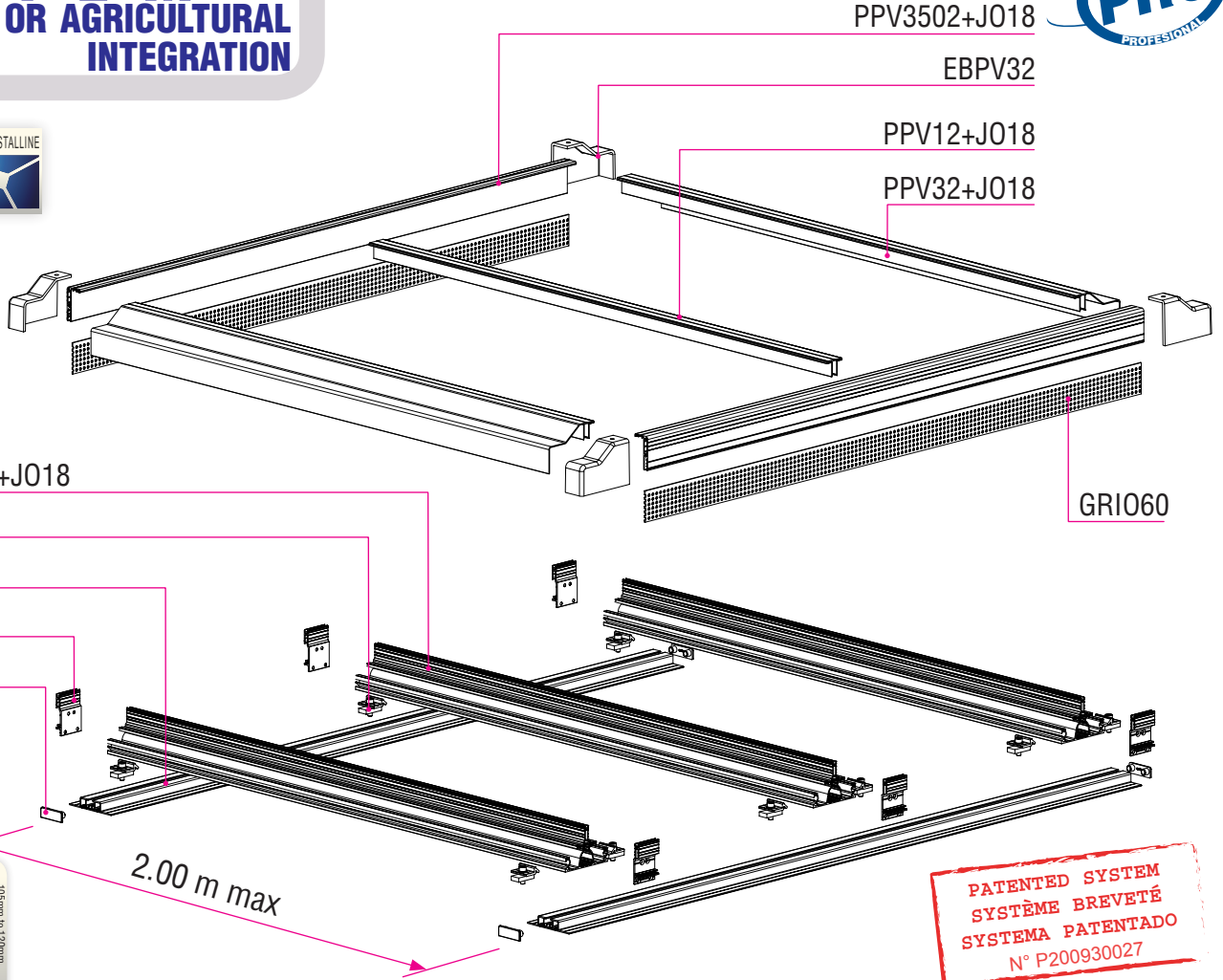


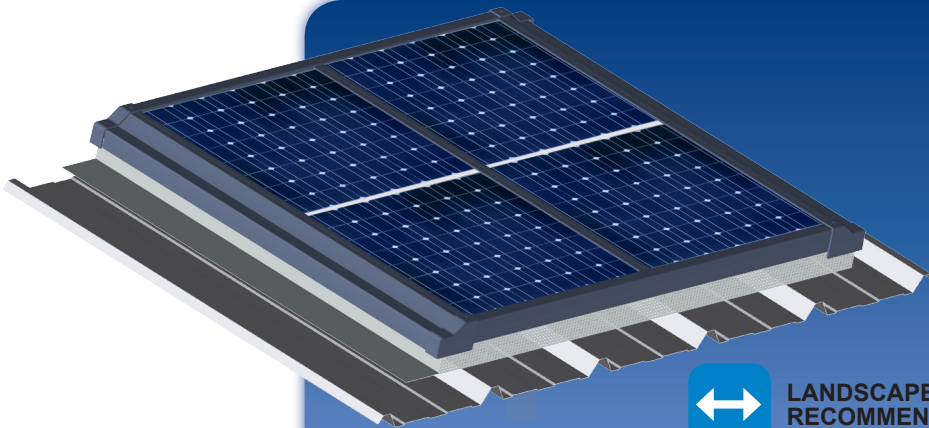
35x50 C MOUNTING SYSTEM

INDUSTRIAL OR AGRICULTURAL SIMPLIFIED INTEGRATION

35 to 50 C mounting system - Industrial or agricultural simplified integration
 Système (35x50C) surimposé industriel ou agricole (sur toiture existante)
 Superposición industrial o agrícola sobre tejado 35-50 C system sin marco
 Industrielle oder landwirtschaftliche Bedachungsanlage N2, Module ohne Rahmen



MITJAVILA



ADVANTAGES

45°
 5°
 0°
 Tilt angle

- Economical
- Unlimited height

For 5mm to 10mm thick panels

LANDSCAPE INSTALLATION RECOMMENDED

FOR FRAMED PANELS

Structure components:
 Aluminium profiles
 Aluminium foundry pieces (AS13)
 A2 stainless steel fastenings RAL 7016 + EPDM washer and joint

Finish:
 - Mill finish
 - Powder coated with PTFE textured finish finish RAL 7016

